

MS35691E
 23 March 2005
 SUPERSEDING
 MS35691D
 29 August 1984

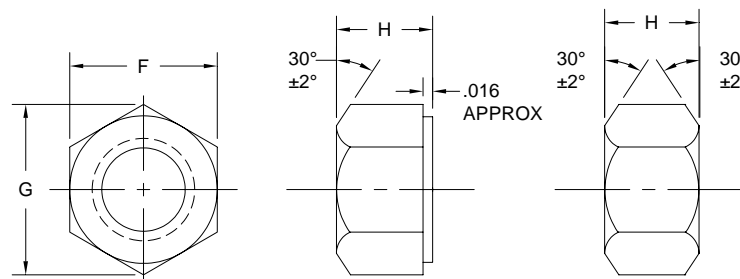
MILITARY SPECIFICATION SHEET

NUT, PLAIN, HEXAGON (JAM) UNC-2B AND UNF-2B

Reactivated after 23 March 2005 and may be used for new and existing designs and acquisitions.

This specification sheet is approved for use by all Departments and Agencies of the Department of Defense.

The requirements for acquiring the product described herein shall consist of this specification sheet and FF-N-836.



OPTIONAL DESIGNS

TABLE I. DESIGN CONFIGURATIONS

NOMINAL SIZE OR BASIC MAJOR DIAMETER OF THREAD	WIDTH ACROSS FLATS		WIDTH ACROSS CORNERS		THICKNESS	
	P		G		H	
	MAX	MIN	MAX	MIN	MAX	MIN
1/4 - .2500	.4375	.428	.505	.488	.163	.150
5/16 - .3125	.5000	.489	.577	.557	.195	.180
3/8 - .3750	.5625	.551	.650	.628	.227	.210
7/16 - .4375	.6875	.675	.794	.768	.260	.240
1/2 - .5000	.7500	.736	.866	.840	.323	.302
9/16 - .5625	.8750	.861	1.010	.982	.324	.301
5/8 - .6250	.9375	.922	1.083	1.051	.387	.363
3/4 - .7500	1.1250	1.088	1.299	1.240	.446	.398
7/8 - .8750	1.3125	1.269	1.516	1.447	.510	.458
1 - 1.0000	1.5000	1.450	1.732	1.653	.575	.519
1 1/8 - 1.1250	1.6875	1.631	1.949	1.859	.639	.579
1 1/4 - 1.2500	1.8750	1.812	2.165	2.066	.751	.687
1 3/8 - 1.3750	2.0625	1.994	2.382	2.273	.815	.747
1 1/2 - 1.5000	2.2500	2.175	2.598	2.480	.880	.808
1 3/4 - 1.7500	2.6250	2.538	3.031	2.893	1.009	.929
2 - 2.0000	3.0000	2.900	3.464	3.306	1.138	1.050
2 1/4 - 2.2500	3.3750	3.262	3.897	3.719	1.251	1.155
2 1/2 - 2.5000	3.7500	3.625	4.330	4.133	1.505	1.401
2 3/4 - 2.7500	4.1250	3.988	4.763	4.546	1.634	1.522
3 - 3.0000	4.5000	4.350	5.196	4.959	1.763	1.643

ACTIVE FOR NEW DESIGN

THE PART NUMBERS IN TABLE II ONLY WILL BE USED FOR DESIGN AND ENGINEERING.

TABLE II. DASH NUMBERS

THREAD SIZE	.2500-20UNC-2B	.2500-28UNF-2B	.3125-18UNC-2B	.3125-24UNF-2B
MATERIAL	DASH NO	DASH NO	DASH NO	DASH NO
STEEL, CARBON, GRADE B, CADMIUM PLATE	1	5	9	13
STEEL, CARBON, GRADE C, CADMIUM PLATE	2	6	10	14
STEEL, CARBON, GRADE B, PHOSPHATE COATED	406	426	506	526
CRES, 300 SERIES, PASSIVATED <u>1</u> /	3	7	11	15
BRASS, BLACK OXIDE <u>2</u> /	4	8	12	16
THREAD SIZE	.3750-16UNC-2B	.3750-24UNF-2B	.4375-14UNC-2B	.4375-20UNF-2B
MATERIAL	DASH NO	DASH NO	DASH NO	DASH NO
STEEL, CARBON, GRADE B, CADMIUM PLATE	17	21	25	29
STEEL, CARBON, GRADE C, CADMIUM PLATE	18	22	26	30
STEEL, CARBON, GRADE B, PHOSPHATE COATED	606	626	706	726
CRES, 300 SERIES, PASSIVATED <u>1</u> /	19	23	27	31
BRASS, BLACK OXIDE <u>2</u> /	20	24	28	32
THREAD SIZE	.5000-13UNC-2B	.5000-20UNF-2B	.5625-12UNC-2B	.5625-18UNF-2B
MATERIAL	DASH NO	DASH NO	DASH NO	DASH NO
STEEL, CARBON, GRADE B, CADMIUM PLATE	33	37	41	45
STEEL, CARBON, GRADE C, CADMIUM PLATE	34	38	42	46
STEEL, CARBON, GRADE B, PHOSPHATE COATED	806	826	-	-
CRES, 300 SERIES, PASSIVATED <u>1</u> /	35	39	43	47
BRASS, BLACK OXIDE <u>2</u> /	36	40	44	48
THREAD SIZE	.6250-11UNC-2B	.6250-18UNF-2B	.7500-10UNC-2B	.7500-16UNF-2B
MATERIAL	DASH NO	DASH NO	DASH NO	DASH NO
STEEL, CARBON, GRADE B, CADMIUM PLATE	49	53	57	61
STEEL, CARBON, GRADE C, CADMIUM PLATE	50	54	58	62
STEEL, CARBON, GRADE B, PHOSPHATE COATED	1006	1026	1206	1226
CRES, 300 SERIES, PASSIVATED <u>1</u> /	51	55	59	63
BRASS, BLACK OXIDE <u>2</u> /	52	56	60	64
THREAD SIZE	.8750-9UNC-2B	.8750-14-UNF-2B	1.0000-8UNC-2B	1.0000-12UNF-2B
MATERIAL	DASH NO	DASH NO	DASH NO	DASH NO
STEEL, CARBON, GRADE B, CADMIUM PLATE	65	69	73	77
STEEL, CARBON, GRADE C, CADMIUM PLATE	66	70	74	78
CRES, 300 SERIES, PASSIVATED <u>1</u> /	67	71	75	79
BRASS, BLACK OXIDE <u>2</u> /	68	72	76	80

ACTIVE FOR NEW DESIGN

THE PART NUMBERS IN TABLE II ONLY WILL BE USED FOR DESIGN AND ENGINEERING.

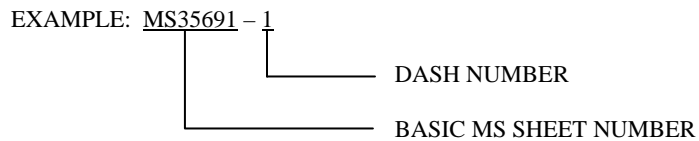
TABLE II. DASH NUMBERS - CONTINUED

THREAD SIZE	1.12500-7UNC-2B	1.12500-12UNF-2B	1.2500-7UNC-2B	1.2500-12UNF-2B
MATERIAL	DASH NO	DASH NO	DASH NO	DASH NO
STEEL, CARBON, GRADE B, CADMIUM PLATE	81	85	89	93
STEEL, CARBON, GRADE C, CADMIUM PLATE	82	86	90	94
CRES, 300 SERIES, PASSIVATED <u>1/</u>	83	87	91	95
BRASS, BLACK OXIDE <u>2/</u>	84	88	92	96
THREAD SIZE	1.3750-6UNC-2B	1.3750-12UNF-2B	1.5000-6UNC-2B	1.5000-12UNF-2B
MATERIAL	DASH NO	DASH NO	DASH NO	DASH NO
STEEL, CARBON, GRADE B, CADMIUM PLATE	97	101	105	109
STEEL, CARBON, GRADE C, CADMIUM PLATE	98	102	106	110
CRES, 300 SERIES, PASSIVATED <u>1/</u>	99	103	107	111
BRASS, BLACK OXIDE <u>2/</u>	100	104	108	112
THREAD SIZE	1.7500-5UNC-2B	2.0000-4-1/2UNC-2B	2.2500-4-1/2UNC-2B	2.5000-4UNC-2B
MATERIAL	DASH NO	DASH NO	DASH NO	DASH NO
STEEL, CARBON, GRADE B, CADMIUM PLATE	113	117	121	125
STEEL, CARBON, GRADE C, CADMIUM PLATE	114	118	122	126
CRES, 300 SERIES, PASSIVATED <u>1/</u>	115	119	123	127
BRASS, BLACK OXIDE <u>2/</u>	116	120	124	128
THREAD SIZE	2.7500-4UNC-2B	3.0000-4UNC-2B		
MATERIAL	DASH NO	DASH NO		
STEEL, CARBON, GRADE B, CADMIUM PLATE	129	133		
STEEL, CARBON, GRADE C, CADMIUM PLATE	130	134		
CRES, 300 SERIES, PASSIVATED <u>1/</u>	131	135		
BRASS, BLACK OXIDE <u>2/</u>	132	136		

1/ SEE REQUIREMENT 52/ SEE REQUIREMENT 5

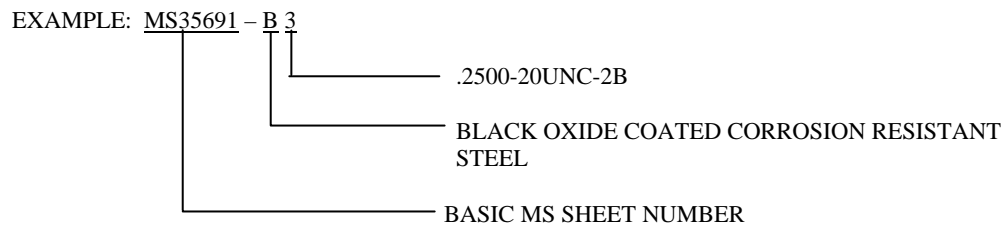
REQUIREMENTS:

1. MATERIAL: STEEL, CARBON, GRADES B AND C, IN ACCORDANCE WITH PROCUREMENT SPECIFICATION.
STEEL, CORROSION RESISTANT, 300 SERIES, IN ACCORDANCE WITH PROCUREMENT SPECIFICATION.
BRASS, IN ACCORDANCE WITH PROCUREMENT SPECIFICATION.
2. PROTECTIVE COATING AND TREATMENT:
CADMIUM PLATED, BLACK OXIDE OR PHOSPHATE COATING, IN ACCORDANCE WITH PROCUREMENT SPECIFICATION.
CLEANED, DESCALED AND PASSIVATED, IN ACCORDANCE WITH ASTM A380.
NICKEL PLATED, IN ACCORDANCE WITH PROCUREMENT SPECIFICATION.
3. MAGNETIC PERMEABILITY. CORROSION RESISTANT STEEL FASTENERS SHALL HAVE A MAGNETIC PERMEABILITY OF 2.0 MAXIMUM (AIR = 1.0) AT A FIELD STRENGTH OF H = 200 OERSTEDS USING A MAGNETIC INDICATOR PER ASTM A342.
4. THREADS. THREADS SHALL BE IN ACCORDANCE WITH FED-STD-H28/2. ACCEPTABILITY OF SCREW THREADS SHALL BE IN ACCORDANCE WITH FED-STD-H28/20, SYSTEM 21.
5. PART NUMBER. THE PART NUMBER CONSISTS OF THE BASIC MS SHEET NUMBER, FOLLOWED BY A DASH NUMBER TAKEN FROM TABLE II.

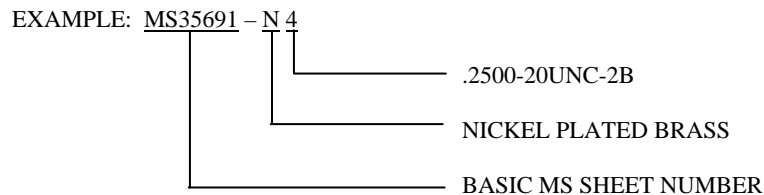


MS35691 - 1 INDICATES - NUT, PLAIN, HEXAGON (JAM) THREAD SIZE .2500-20UNC-2B, STEEL, CARBON, GRADE B, CADMIUM PLATED.

1/ ADD "B" BEFORE DASH NUMBER FOR CORROSION RESISTANT STEEL NUTS WITH BLACK OXIDE COATING, CLASS 4, IN ACCORDANCE WITH MIL-DTL-13924.



2/ ADD "N" BEFORE DASH NUMBER FOR BRASS NUTS WITH NICKEL PLATING, IN ACCORDANCE WITH PROCUREMENT SPECIFICATION.



NOTES:

1. DIMENSIONS ARE IN INCHES.
2. FOR DESIGN USE PART NUMBERS IN TABLE II.
3. FOR CANCELLED PART NUMBERS SEE TABLE III.
4. FOR MAINTENANCE USE INACTIVE PART NUMBERS OF TABLE IV.
5. FOR INTERCHANGEABILITY BETWEEN THE CANCELLED (GRADE "A", UNCOATED) NUTS AND SUPERSEDING INACTIVATED(GRADE"B", UNCOATED) NUTS, SEE TABLE V.
6. FOR INTERCHANGEABILITY OF CANCELLED OR INACTIVATED AND NEW PART NUMBERS, SEE TABLE VI AND TABLE VII.
7. FOR DESIGN FEATURE PURPOSES, THIS STANDARD TAKES PRECEDENCE OVER PROCUREMENT DOCUMENTS REFERENCED HEREIN.
8. CHANGES FROM PREVIOUS ISSUE. MARGINAL NOTATIONS ARE NOT USED IN THIS REVISION TO IDENTIFY CHANGES WITH RESPECT TO THE PREVIOUS ISSUE DUE TO THE EXTENT OF THE CHANGES.

CANCELLED PART NUMBERS

THE FOLLOWING PART NUMBERS ARE CANCELLED AFTER 21 MAR 1966

TABLE III

THREAD SIZE	.2500-20UNC-2B	.2500-28UNF-2B	.3125-18UNC-2B	.3125-24UNF-2B
MATERIAL	DASH NO	DASH NO	DASH NO	DASH NO
STEEL, CARBON, GRADE A, UNCOATED	401	421	501	521
CAD OR ZINC OPTIONAL	402	422	502	522
PHOSPHATE	403	423	503	523
STEEL, CARBON, GRADE B, CAD OR ZINC OPTIONAL	405	425	505	525
STEEL, CARBON, GRADE C, CAD OR ZINC OPTIONAL	408	428	508	528
PHOSPHATE	409	429	509	529
CRES, 300-400 SERIES, PASSIVATED	410	430	510	530
BRASS, UNCOATED	411	431	511	531
TIN PLATED	412	432	512	532
THREAD SIZE	.3750-16UNC-2B	.3750-24UNF-2B	.4375-14UNC-2B	.4375-20UNF-2B
MATERIAL	DASH NO	DASH NO	DASH NO	DASH NO
STEEL, CARBON, GRADE A, UNCOATED	601	621	701	721
CAD OR ZINC OPTIONAL	602	622	702	722
PHOSPHATE	603	623	703	723
STEEL, CARBON, GRADE B, CAD OR ZINC OPTIONAL	605	625	705	725
STEEL, CARBON, GRADE C, CAD OR ZINC OPTIONAL	608	628	708	728
PHOSPHATE	609	629	709	729
CRES, 300-400 SERIES PASSIVATED	610	630	710	730
BRASS, UNCOATED	611	631	711	731
TIN PLATED	612	632	-	-
THREAD SIZE	.5000-13UNC-2B	.5000-20UNF-2B	.5625-12UNC-2B	.5625-18UNF-2B
MATERIAL	DASH NO	DASH NO	DASH NO	DASH NO
STEEL, CARBON, GRADE A, UNCOATED	801	821	901	921
CAD OR ZINC OPTIONAL	802	822	902	922
PHOSPHATE	803	823	903	923
STEEL, CARBON, GRADE B, CAD OR ZINC OPTIONAL	805	825	905	925
PHOSPHATE	-	-	906	926
STEEL CARBON, GRADE C, CAD OR ZINC OPTIONAL	808	828	908	928
PHOSPHATE	809	829	909	929
CRES, 300-400 SERIES, PASSIVATED	810	830	910	930
BRASS, UNCOATED	811	831	911	931

CANCELLED PART NUMBERS

THE FOLLOWING PART NUMBERS ARE CANCELLED AFTER 21 MAR 1966

TABLE III – CONTINUED

THREAD SIZE	.6250-11UNC-2B	.6250-18UNF-2B	.7500-10UNC-2B	.7500-16UNF-2B
MATERIAL	DASH NO	DASH NO	DASH NO	DASH NO
STEEL, CARBON, GRADE A, UNCOATED	1001	1021	1201	1221
CAD OR ZINC OPTIONAL	1002	1022	1202	1222
PHOSPHATE	1003	1023	1203	1223
STEEL, CARBON, GRADE B, CAD OR ZINC OPTIONAL	1005	1025	1205	1225
STEEL, CARBON, GRADE C, CAD OR ZINC OPTIONAL	1008	1028	1208	1228
PHOSPHATE	1009	1029	1209	1229
CRES, 300-400 SERIES, PASSIVATED	1010	1030	1210	1230
BRASS, UNCOATED	1011	1031	1211	1231
THREAD SIZE	.8750-9UNC-2B	.8750-14UNF-2B	1.0000-8UNC-2B	1.0000-12UNF-2B
MATERIAL	DASH NO	DASH NO	DASH NO	DASH NO
STEEL, CARBON, GRADE A, UNCOATED	1401	1421	1601	1621
CAD OR ZINC OPTIONAL	1402	1422	1602	1622
PHOSPHATE	1403	1423	1603	1623
STEEL, CARBON, GRADE B, CAD OR ZINC OPTIONAL	1405	1425	1605	1625
PHOSPHATE	1406	1426	1606	1626
STEEL, CARBON, GRADE C, CAD OR ZINC OPTIONAL	1408	1428	1608	1628
PHOSPHATE	1409	1429	1609	1629
CRES, 300-400 SERIES PASSIVATED	1410	1430	1610	1630
BRASS, UNCOATED	1411	1431	1611	1631
THREAD SIZE	1.1250-7UNC-2B	1.1250-12UNF-2B	1.2500-7UNC-2B	1.2500-12UNF-2B
MATERIAL	DASH NO	DASH NO	DASH NO	DASH NO
STEEL, CARBON, GRADE A, UNCOATED	1801	1821	2001	2021
CAD OR ZINC OPTIONAL	1802	1822	2002	2022
PHOSPHATE	1803	1823	2003	2023
STEEL, CARBON, GRADE B, CAD OR ZINC OPTIONAL	1805	1825	2005	2025
PHOSPHATE	1806	1826	2006	2026
STEEL CARBON, GRADE C, CAD OR ZINC OPTIONAL	1808	1828	2008	2028
PHOSPHATE	1809	1829	2009	2029
CRES, 300-400 SERIES, PASSIVATED	1810	1830	2010	2030
BRASS, UNCOATED	1811	1831	2011	2031

CANCELLED PART NUMBERS

THE FOLLOWING PART NUMBERS ARE CANCELLED AFTER 21 MAR 1966

TABLE III - CONTINUED

THREAD SIZE	1.3750-6UNC-2B	1.3750-12UNF-2B	1.5000-6UNC-2B	1.5000-12UNF-2B
MATERIAL	DASH NO	DASH NO	DASH NO	DASH NO
STEEL, CARBON, GRADE A, UNCOATED	2201	2221	2401	2421
CAD OR ZINC OPTIONAL	2202	2222	2402	2422
PHOSPHATE	2203	2223	2403	2423
STEEL, CARBON, GRADE B, CAD OR ZINC OPTIONAL	2205	2225	2405	2425
PHOSPHATE	2206	2226	2406	2426
STEEL, CARBON, GRADE C, CAD OR ZINC OPTIONAL	2208	2228	2408	2428
PHOSPHATE	2209	2229	2409	2429
CRES, 300-400 SERIES, PASSIVATED	2210	2230	2410	2430
BRASS, UNCOATED	2211	2231	2411	2431
THREAD SIZE	1.7500-5UNC-2B	2.0000-4-1/2UNC-2B	2.2500-4-1/2UNC-2B	2.5000-4UNC-2B
MATERIAL	DASH NO	DASH NO	DASH NO	DASH NO
STEEL, CARBON, GRADE A, UNCOATED	2801	3201	3601	4001
CAD OR ZINC OPTIONAL	2802	3202	3602	4002
PHOSPHATE	2803	3203	3603	4003
STEEL, CARBON, GRADE B, CAD OR ZINC OPTIONAL	2805	3205	3605	4005
PHOSPHATE	2806	3206	3606	4006
STEEL, CARBON, GRADE C, CAD OR ZINC OPTIONAL	2808	3208	3608	4008
PHOSPHATE	2809	3209	3609	4009
CRES, 300-400 SERIES PASSIVATED	2810	3210	3610	4010
BRASS, UNCOATED	2811	3211	3611	4011
THREAD SIZE	2.7500-4UNC-2B	3.0000-4UNC-2B		
MATERIAL	DASH NO	DASH NO		
STEEL, CARBON, GRADE A, UNCOATED	4401	4801		
CAD OR ZINC OPTIONAL	4402	4802		
PHOSPHATE	4403	4803		
STEEL, CARBON, GRADE B, CAD OR ZINC OPTIONAL	4405	4805		
PHOSPHATE	4406	4806		
STEEL CARBON, GRADE C, CAD OR ZINC OPTIONAL	4408	4808		
PHOSPHATE	4409	4809		
CRES, 300-400 SERIES, PASSIVATED	4410	4810		
BRASS, UNCOATED	4411	4811		

INACTIVE PART NUMBERS FOR NEW DESIGN

THE FOLLOWING PART NUMBERS IN TABLE IV ARE INACTIVE FOR NEW DESIGN AFTER 21 MAR 1966.
USE FOR MAINTENANCE PURPOSES ONLY.

TABLE IV

THREAD SIZE	.2500-20UNC-2B	.2500-28UNF-2B	.3125-18UNC-2B	.3125-24UNF-2B
MATERIAL	DASH NO	DASH NO	DASH NO	DASH NO
STEEL, CARBON, GRADE B, UNCOATED	404	424	504	524
STEEL, CARBON, GRADE C, UNCOATED	407	427	507	527
THREAD SIZE	.3750-16UNC-2B	.3750-24UNF-2B	.4375-14UNC-2B	.4375-20UNF-2B
MATERIAL	DASH NO	DASH NO	DASH NO	DASH NO
STEEL, CARBON, GRADE B, UNCOATED	604	624	704	724
STEEL, CARBON, GRADE C, UNCOATED	607	627	707	727
THREAD SIZE	.5000-13UNC-2B	.5000-20UNF-2B	.5625-12UNC-2B	.5625-18UNF-2B
MATERIAL	DASH NO	DASH NO	DASH NO	DASH NO
STEEL, CARBON, GRADE B, UNCOATED	804	824	904	924
STEEL, CARBON, GRADE C, UNCOATED	807	827	907	927
THREAD SIZE	.6250-11UNC-2B	.6250-18UNF-2B	.7500-10UNC-2B	.7500-16UNF-2B
MATERIAL	DASH NO	DASH NO	DASH NO	DASH NO
STEEL, CARBON, GRADE B, UNCOATED	1004	1024	1204	1224
STEEL, CARBON, GRADE C, UNCOATED	1007	1027	1207	1227
THREAD SIZE	.8750-9UNC-2B	.8750-14UNF-2B	1.0000-8UNC-2B	1.0000-12UNF-2B
MATERIAL	DASH NO	DASH NO	DASH NO	DASH NO
STEEL, CARBON, GRADE B, UNCOATED	1404	1424	1604	1624
STEEL, CARBON, GRADE B, UNCOATED	1407	1427	1607	1627
THREAD SIZE	1.1250-7UNC-2B	1.1250-12UNF-2B	1.2500-7UNC-2B	1.2500-12UNF-2B
MATERIAL	DASH NO	DASH NO	DASH NO	DASH NO
STEEL CARBON, GRADE B, UNCOATED	1804	1824	2004	2024
STEEL, CARBON, GRADE C, UNCOATED	1807	1827	2007	2027
THREAD SIZE	1.3750-6UNC-2B	1.3750-12UNF-2B	1.5000-6UNC-2B	1.5000-12UNF-2B
MATERIAL	DASH NO	DASH NO	DASH NO	DASH NO
STEEL, CARBON, GRADE B, UNCOATED	2204	2224	2404	2424
STEEL, CARBON, GRADE C, UNCOATED	2207	2227	2407	2427

INACTIVE PART NUMBERS FOR NEW DESIGN

THE FOLLOWING PART NUMBERS IN TABLE IV ARE INACTIVE FOR NEW DESIGN AFTER 21 MAR 1966.
USE FOR MAINTENANCE PURPOSES ONLY.

TABLE IV - CONTINUED

THREAD SIZE	1.7500-5UNC-2B	2.0000-4-1/4UNC-2B	2.2500-4-1/2UNC-2B	2.5000-4UNC-2B
MATERIAL	DASH NO	DASH NO	DASH NO	DASH NO
STEEL, CARBON, GRADE B, UNCOATED	2804	3204	3604	4004
STEEL, CARBON, GRADE C, UNCOATED	2807	3207	3607	4007
THREAD SIZE	2.7500-4UNC-2B	3.0000-4UNC-2B		
MATERIAL	DASH NO	DASH NO		
STEEL, CARBON, GRADE B, UNCOATED	4404	4804		
STEEL, CARBON, GRADE C, UNCOATED	4407	4807		

INTERCHANGEABILITY TABLE OF CANCELLED AND SUPERSEDING INACTIVATED PART NUMBERS

FOR INTERCHANGEABILITY BETWEEN THE CANCELLED (GRADE "A" UNCOATED) NUT
AND THE SUPERSEDING INACTIVATED (GRADED "B" UNCOATED) NUTS, SEE TABLE V.

TABLE IV

PART NUMBERS		PART NUMBERS		PART NUMBERS		PART NUMBERS	
CANCELLED	SUPERSEDING INACTIVATED	CANCELLED	SUPERSEDING INACTIVATED	CANCELLED	SUPERSEDING INACTIVATED	CANCELLED	SUPERSEDING INACTIVATED
MS35691-401	MS35691- 404	MS35691- 801	MS35691- 804	MS35691-1401	MS35691-1404	MS35691-2201	MS35691-2204
421	424	821	824	1421	1424	2221	2224
501	504	901	904	1601	1604	2401	2404
521	524	921	924	1621	1624	2421	2424
601	604	1001	1004	1801	1804	2801	2804
621	624	1021	1024	1821	1824	3201	3204
701	704	1201	1204	2001	2004	3601	3604
721	724	1221	1224	2021	2024	4001	4004
						4401	4404
						4801	4804

INTERCHANGEABILITY TABLE OF CANCELLED OR INACTIVATED AND SUPERSEDING PART NUMBERS

THE NUTS COVERED BY THE DASH NUMBERS GIVEN IN THE ORIGINAL ISSUE OF THIS STANDARD ARE CANCELLED OR INACTIVATED 1/ AFTER 21 MAR 1966. THE CANCELLED NUTS SHOULD BE USED FOR MAINTENANCE PURPOSE UNTIL EXISTING STOCK IS DEPLETED. USE ONLY THE SUPERSEDING NUTS FOR DESIGN.

TABLE VI

PART NUMBERS		PART NUMBERS		PART NUMBERS		PART NUMBERS	
CANCELLED OR INACTIVATED	SUPERSEDING	CANCELLED OR INACTIVATED	SUPERSEDING	CANCELLED OR INACTIVATED	SUPERSEDING	CANCELLED OR INACTIVATED	SUPERSEDING
MS35691-401	MS35691 - 1	MS35691 - 605	MS35691 - 17	MS35691 - 821	MS35691 - 37	MS35691 - 1028	MS35691 - 54
402	1	<u>1/</u> 607	18	822	37	1029	54
403	1	608	18	823	37	1030	55
<u>1/</u> 404	1	609	18	<u>1/</u> 824	37	1031	56
405	1	610	19	825	37	1201	57
<u>1/</u> 407	2	611	20	<u>1/</u> 827	38	1202	57
408	2	612	20	828	38	1203	57
409	2	621	21	829	38	<u>1/</u> 1204	57
410	3	622	21	830	39	1205	57
411	4	623	21	831	40	<u>1/</u> 1207	58
412	4	<u>1/</u> 624	21	901	41	1208	58
421	5	625	21	902	41	1209	58
422	5	<u>1/</u> 627	22	903	41	1210	59
423	5	628	22	<u>1/</u> 904	41	1211	60
<u>1/</u> 424	5	629	22	905	41	1221	61
425	5	630	23	906	41	1222	61
<u>1/</u> 427	6	631	24	<u>1/</u> 907	42	1223	61
428	6	632	24	908	42	<u>1/</u> 1224	61
429	6	701	25	909	42	1225	61
430	7	702	25	910	43	<u>1/</u> 1227	62
431	8	703	25	911	44	1228	62
432	8	<u>1/</u> 704	25	921	45	1229	62
501	9	705	25	922	45	1230	63
502	9	<u>1/</u> 707	26	923	45	1231	64
503	9	708	26	<u>1/</u> 924	45	1401	65
<u>1/</u> 504	9	709	26	925	45	1402	65
505	9	710	27	926	45	1403	65
<u>1/</u> 507	10	711	28	<u>1/</u> 927	46	<u>1/</u> 1404	65
508	10	721	29	928	46	1405	65
509	10	722	29	929	46	1406	65
510	11	723	29	930	47	<u>1/</u> 1407	66
511	12	<u>1/</u> 724	29	931	48	1408	66
512	12	725	29	1001	49	1409	66
521	13	<u>1/</u> 727	30	1002	49	1410	67
522	13	728	30	1003	49	1411	68
523	13	729	30	<u>1/</u> 1004	49	1421	69
<u>1/</u> 524	13	730	31	1005	49	1422	69
525	13	731	32	<u>1/</u> 1007	50	1423	69
<u>1/</u> 527	14	801	33	1008	50	<u>1/</u> 1424	69
528	14	802	33	1009	50	1425	69
529	14	803	33	1010	51	1426	69
530	15	<u>1/</u> 804	33	1011	52	<u>1/</u> 1427	70
531	16	805	33	1021	53	1428	70
532	16	<u>1/</u> 807	34	1022	53	1429	70
601	17	808	34	1023	53	1430	71
602	17	809	34	<u>1/</u> 1024	53	1431	72
603	17	810	35	1025	53	1601	73
<u>1/</u> 604	17	811	36	<u>1/</u> 1027	54	1602	73

INTERCHANGEABILITY TABLE OF CANCELLED OR INACTIVATED AND SUPERSEDING PART NUMBERS

THE NUTS COVERED BY THE DASH NUMBERS GIVEN IN THE ORIGINAL ISSUE OF THIS STANDARD ARE CANCELLED OR INACTIVATED 1/ AFTER 21 MAR 1966. THE CANCELLED NUTS SHOULD BE USED FOR MAINTENANCE PURPOSE UNTIL EXISTING STOCK IS DEPLETED. USE ONLY THE SUPERSEDING NUTS FOR DESIGN.

TABLE VI - CONTINUED.

PART NUMBERS		PART NUMBERS		PART NUMBERS		PART NUMBERS	
CANCELLED OR INACTIVATED	SUPERSEDING	CANCELLED OR INACTIVATED	SUPERSEDING	CANCELLED OR INACTIVATED	SUPERSEDING	CANCELLED OR INACTIVATED	SUPERSEDING
MS35691 - 1603	MS35691 - 73	<u>1/</u> MS35691 - 2004	MS35691 - 89	MS35691 - 2405	MS35691 - 105	MS35691 - 3606	MS35691 - 121
<u>1/</u> 1604	73	2005	89	2406	105	3607	122
1605	73	2006	89	<u>1/</u> 2407	106	3608	122
1606	73	<u>1/</u> 2007	90	2408	106	3609	122
<u>1/</u> 1607	74	2008	90	2409	106	3610	123
1608	74	2009	90	2410	107	3611	124
1609	74	2010	91	2411	108	4001	125
1610	75	2011	92	2421	109	4002	125
1611	76	2021	93	2422	109	4003	125
1621	77	2022	93	2423	109	<u>1/</u> 4004	125
1622	77	2023	93	<u>1/</u> 2424	109	4005	125
1623	77	<u>1/</u> 2024	93	2425	109	4006	125
<u>1/</u> 1624	77	2025	93	2426	109	<u>1/</u> 4007	126
1625	77	2026	93	<u>1/</u> 2427	110	4008	126
1626	77	<u>1/</u> 2027	94	2428	110	4009	126
<u>1/</u> 1627	78	2028	94	2429	110	4010	127
1628	78	2029	94	2430	111	4011	128
1629	78	2030	95	2431	112	4401	129
1630	79	2031	96	2801	113	4402	129
1631	80	2201	97	2802	113	4403	129
1801	81	2202	97	2803	113	<u>1/</u> 4404	129
1802	81	2203	97	<u>1/</u> 2804	113	4405	129
1803	81	<u>1/</u> 2204	97	2805	113	4406	129
<u>1/</u> 1804	81	2205	97	2806	113	<u>1/</u> 4407	130
1805	81	2206	97	<u>1/</u> 2807	114	4408	130
1806	81	<u>1/</u> 2207	98	2808	114	4409	130
<u>1/</u> 1807	82	2208	98	2809	114	4410	131
1808	82	2209	98	2810	115	4411	132
1809	82	2210	99	2811	116	4801	133
1810	83	2211	100	3201	117	4802	133
1811	84	2221	101	3202	117	4803	133
1821	85	2222	101	3203	117	<u>1/</u> 4804	133
1822	85	2223	101	<u>1/</u> 3204	117	4805	133
1823	85	<u>1/</u> 2224	101	3205	117	4806	133
<u>1/</u> 1824	85	2225	101	3206	117	<u>1/</u> 4807	134
1825	85	2226	101	<u>1/</u> 3207	118	4808	134
1826	85	<u>1/</u> 2227	102	3208	118	4809	134
<u>1/</u> 1827	86	2228	102	3209	118	4810	135
1828	86	2229	102	3210	119	4811	136
1829	86	2230	103	3211	120		
1830	87	2231	104	3601	121		
1831	88	2401	105	3602	121		
2001	89	2402	105	3603	121		
2002	89	2403	105	<u>1/</u> 3604	121		
2003	89	<u>1/</u> 2404	105	3605	121		

INTERCHANGEABILITY TABLE OF CANCELLED AND SUPERSEDING PART NUMBERS

THE FOLLOWING NUTS COVERED BY DASH NUMBERS GIVEN IN MS16203 (SHIPS) ARE CANCELLED AFTER THE DATE INDICATED ON THE CANCELLED DOCUMENT. USE THE DASH NUMBERS GIVEN IN TABLE II. THE CANCELLED NUTS CANNOT ALWAYS REPLACE THE NEW NUTS AND SHOULD BE USED UNTIL EXISTING STOCKS ARE DEPLETED. USE ONLY THE NEW NUTS FOR NEW DESIGN AND REPLACEMENT. REPLACEMENT SHALL BE IN ACCORDANCE WITH TABLES VI AND VII. INTERCHANGEABILITY INFORMATION REGARDING PART NUMBERS ON THE SUPERSEDED DRAWING IS ALSO CONTAINED IN THIS TABLE.

TABLE VII

DASH NUMBERS		DASH NUMBERS		DASH NUMBERS	
CANCELLED MS16203 (SHIPS)	SUPERSEDED BY MS35691	CANCELLED MS16203 (SHIPS)	SUPERSEDED BY MS35691	CANCELLED MS16203 (SHIPS)	SUPERSEDED BY MS35691
-13	-3	-17	-35	-21	-75
-14	-11	-18	-51	-22	-83
-15	-19	-19	-59	-23	-91
-16	-27	-20	-67	-24	-107

Custodians:
Air Force – 99

Preparing activity:
DLA-IS
(Project 5310-2722)

NOTE: The activities listed above were interested in this document as of the date of this document. Since organizations and responsibilities can change, you should verify the currency of the information above using the ASSIST Online database at mailto:<http://assist.daps.dla.mil/>